

## Supplementary Notes 10: Winbatch Programming

### Displaying Text

```
Message("Hello", "Nice to meet you!")
```



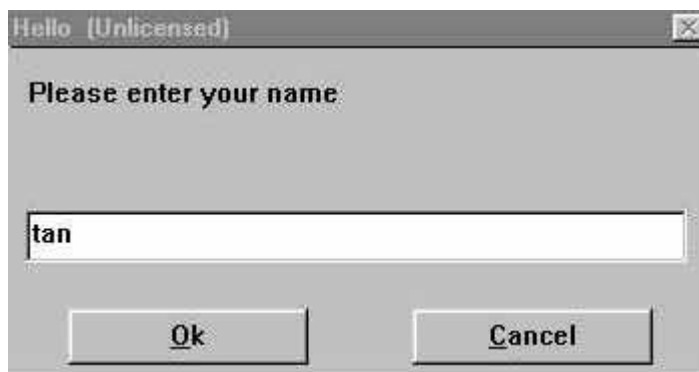
```
Display (5, "Hello friend!", "Selamat Petang.")
```



In our example above, we are displaying the box for 5 seconds. The second parameter is the title of the message box, and the third parameter is the actual text displayed in the box.

### Getting Input

```
name = AskLine("Hello", "Please enter your name", "")
```



```
pw = AskPassword("Security check", "Enter your password")
```



```
AskYesNo("Really?", "Are you a boy?")
```



## Using Variables

```
response=AskYesNo("Really?", "Are you a boy?")
```

The function returns a value of either @YES or @NO. Then, WIL assigns this returned value to response. Therefore, response is now equal to either @YES or @NO, depending on what the user enters.

## Making Decisions

```
response=AskYesNo("Really?", " Are you a boy?")
If response == @YES
    Message("Hello", "Be a good boy!")
Else
    Message("Hello", "Good girl!")
Endif
```

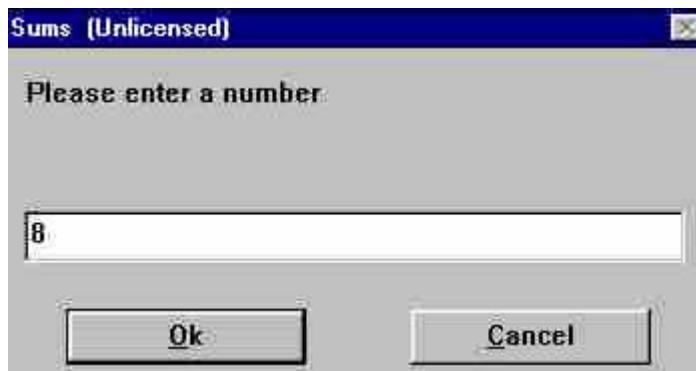


## Control of Program Flow

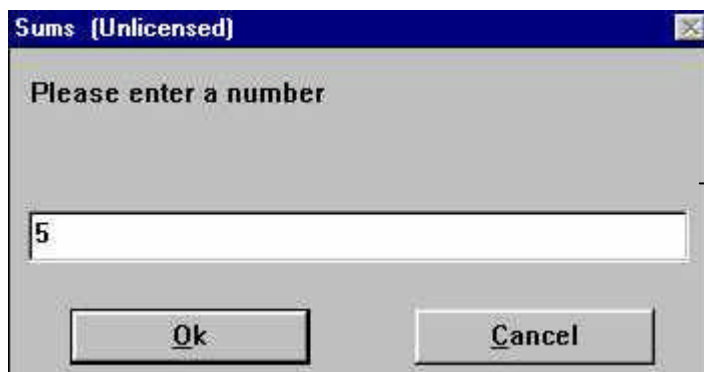
The **For** command is more complex than the previous commands. It controls the looping of a block of code based on an incrementing index. The statement says, "Repeat the block of code for each value of a variable from the initial value to the final value, incrementing the variable after each pass of the loop"

Example:

```
; Compute sum of numbers between 1 and selected number  
a=AskLine("Sums", "Please enter a number", 5)  
total=0  
For j = 1 to a  
    total = total + j  
Next  
Message("Sum [ 1 to %a% ] is", total)
```



8



5

